

DIALYSIS BOOT CAMP: BRUSHING UP YOUR SKILLS

"I had a lifetime experience. I think every Technician should at least attend one NANT event in their career. This conference was very educational. Thank you so much for providing the NANT for Technicians! Thank you!"

 NANT

32ND ANNUAL SYMPOSIUM

16-19 March 2015
Tropicana Hotel, Las Vegas

This year's symposium focuses on brushing up your dialysis skills to improve the quality of care to the CKD patients in dialysis. From our pre-symposium workshops through our three day symposium, we zero in on different dialysis topics designed to brush up your skills.

We offer three pre-symposium workshops on Monday. The **Water Treatment Workshop** will include a copy of the newly published *Water Treatment for Dialysis* for each participant and will feature several of the authors of this first new book

on water treatment since the FDA publication in 1986.

Are You in Compliance? Workshop will feature knowledgeable speakers about each of the key organizations that dialysis clinics must be in compliance with: OSHA, Joint Commission, CMS and more.

Fresenius will offer a workshop on troubleshooting its dialysis machines.

Our three-day symposium is designed to provide both sessions for biomedical and clinical technicians. Our general session on Tuesday features interactive sessions where you can test your

knowledge and Shad Ireland, a former dialysis patient talking about his Baseline Patient Empowerment Project. You can't afford to miss this year's symposium!

Register by 28 February and receive free business cards! You can specify name only or your registration contact information. These business cards can be used to share your information with others and support your professional networking abilities. *Please be sure that your registration information reflects your current information.*

Please check www.dialysistech.net for program updates

THIS YEAR'S SYMPOSIUM FEATURES...

General sessions on Tuesday, March 17 will feature:

- **Become the Expert on Bedbugs in One Hour!** *Larry Park, MSPH, CHCM, CPEA*
- **The A&P Quiz Show** with *Amelia Bell Hawkins*
- **Fears and Tears: A New Way of Looking at Emotions in Dialysis Patients,** *Terri Cally, LMSW*
- **Healthcare Reform-Flying Into the Future,** *Denise VanValkenburg, RN, BA*
- **Baseline Patient Empowerment Project,** *Shad Ireland*

Concurrent sessions on Wednesday, March 18 will include a full day of focused sessions for *clinical technicians* and *biomedical technicians*.

Thursday's **general sessions** include these presentations:

- **What's Wrong with This Picture?** *Clarica Douglas, CHT*
- **End of Life Issues**
- **Moving Forward** *John Sweeney, BS, CHT*

Monday will feature a range of **pre-Symposium workshops** at a slight additional fee. Two new workshops this year will provide a full day focus on **Water Treatment** and **Are You in Compliance?** The **Fresenius Troubleshooting Workshop** is back by popular demand.

Come to **Club NANT** on Wednesday night at the new Havana Room at the Tropicana.

- Light appetizers and cocktails
- Music and dancing
- Lip Sync Battle – check out www.youtube.com/watch?v=bLBSoc_2IY8 and get ready to challenge your friends!
- Prizes

Sponsored by **GIA Medical**



IMPORTANT! When planning your travel, be sure your flight does **NOT** leave before 1:30 pm on Thursday. You don't want to miss our full morning of speakers on Thursday, especially John Sweeney! That way, you will earn all the contact hours you possibly can from this symposium towards your recertification.

WORKSHOPS

MONDAY

Workshops provide opportunities for technicians to gain in-depth knowledge in three areas.

Workshop fees include refreshment breaks (but not lunch). To ensure your participation, you must register in advance.

Workshops begin at 8:30 am and end by 4:00 pm, with a break for lunch. All workshops offer a full day of education and up to 7.2 contact hours. **Space is limited – register NOW!**

NEW THIS YEAR Are You in Compliance?

8:30 am – 4:00 pm, 7.2 contact hours
Fee: \$75 for NANT Members
\$95 for non-members

There is an alphabet soup of organizations that dialysis units must be in compliance with: OSHA, Joint Commission, CMS, CDC and more. This six hour workshop features Larry Park, MSPH, CHCM, CPEA, Fresenius Medical Care NA; Danilo Concepcion, CBNT, CCHT-A, FNKF, Operations Manager, Renal Services, St. Joseph Hospital and Denise VanValkenburgh, RN, BA, consultant. If your dialysis unit is scheduled for an audit by any of these organizations, you don't want to miss this workshop!



Larry Park, MSPH, CHCM, CPEA

Lawrence K. Park is currently the Vice President for Corporate Health, Safety, Environmental Affairs,

Engineering, Security and Risk Management for Fresenius Medical Care North America and has been with the company for 25+

years. He is board certified in hazard control management, health and safety auditing and workers compensation management, is an authorized OSHA Outreach General Industry Instructor and holds a Masters of Science Degree from University of Massachusetts School of Public Health. He has been published in over a dozen different journals and made over 200 national and local presentations. He serves on the Medical Device & Diagnostic Industry Journal's Manuscript Review Board, was a contributing author to the NANT Dialysis Technology Manual for Dialysis Technicians and to the CMS Emergency Preparedness For Dialysis Facilities Manual, was a selected participant with Florida OSHA on development of industry specific safety and written programs, was on advisory panel for OSHA Compliance Insider For Healthcare Facilities, and recipient of Safety In Excellence Award from CNA Insurance for 12 straight years.

Water Treatment Workshop

8:30 am – 4:00 pm, 7.2 contact hours
Fee: \$75 for NANT Members
\$95 for non-members

Participants will receive a copy of the newly published **Water Treatment for Dialysis** (a \$50 member/\$75 non-member value).

This workshop will feature authors of chapters of the newest book on water treatment for dialysis as well as an overview by AmeriWater, B. Braun and MarCor on their water treatment products. This workshop is a must for every biomedical technician!

Machine Troubleshooting

8:30 am – 4:00 pm, 7.2 contact hours
Fee: \$15 for NANT Members
\$25 for non-members

This workshop will provide insight into how to troubleshoot the Fresenius dialysis machines and review of common problems and how to avoid them.

REGISTER ONLINE
WWW.DIALYSISTECH.NET

QUESTIONS?

email nant@meinet.com or call 877.607.NANT

SCHOLARSHIPS

Anyone who wants to attend the Annual Symposium 16–19 March 2015 should look into scholarship opportunities. Each year sponsors make it possible for dozens of technicians to attend NANT's signature event.

Scholarships cover registration costs, three nights' lodging at the symposium hotel and a cash stipend.

The scholarships have varying eligibility requirements but in general are open to a broad cross-section of individuals who would benefit from attending. The application processes are not complicated.

Best of all, you will be considered for each scholarship for which you qualify, based on your answers on the application form.

It's easy to apply for a scholarship. Download the Scholarship Application, complete it, along with an essay of up to 250 words explaining why you want to attend the symposium, and submit to NANT by the deadline.

Go to <http://dialysistech.net/education/scholarships> to download your scholarship application. Deadline is 7 January 2015

PROGRAM HIGHLIGHTS

GENERAL SESSIONS

TUESDAY

Become the Expert on Bedbugs in One Hour! *Larry Park, MSPH, CHCM, CPEA*

The saying, "Sleep tight! Don't let the bedbugs bite!" Is sometimes a reality for dialysis units. This session is guaranteed to give you useful information about how to deal with bedbug infestations. Larry Park is an energetic, engaging speaker who will give you specific tools and tips of how to deal with this pesky bug.

The A & P Quiz Show *Amelia Bell Hawkins, MSN, RN, APRN-BC, CRNP-F*



Anatomy and Physiology are the basics of dialysis. This interactive session will help you gauge your knowledge. How good will your score be?

Fears and Tears: A New Way of Looking at Emotions in Dialysis Patients *Terri Cally, LMSW Education and Community Outreach Director, MARC Network 5*

This session deals with biological and evolutionary purposes of tears and our Fight or Flight response, and uses other evolutionary examples of adapted animals and human skin colors to illustrate biological realities in our patients.

Healthcare Reform-Flying Into the Future *Denise VanValkenburgh, RN, BA*

Certification: Future Trends, Recertification Requirements – BONENT, NNCC and NNCO

With new certifications being introduced for dialysis technicians and the continuing need for recertification to maintain your dialysis position, certification is now front and center for technicians. Come prepared to learn the latest in dialysis technician certification.

Baseline Patient Empowerment Project *Shad Ireland*



Shad Ireland was born with healthy kidneys in May, 1972. Almost exactly eleven years later, in

May, 1983, he and his mother got the news that those kidneys were now diseased and he would have to be on dialysis while awaiting a kidney transplant. Shad eventually underwent two transplant operations. The first kidney transplant, at age 18, lasted for three years. The second transplant was unsuccessful. Facing a life of illness and having been told he would probably only live until he was 25, Shad decided to cram as much living on the edge into his life as he could. To him, that meant partying and having a good time even as he endured regular dialysis. He had no real goals beyond making sure what happened in the next 24 hours was based on having fun.

Then one day in 1993, weighing just 75 pounds and recovering very slowly from the rejection of his first transplanted kidney, Shad was resting and watching television. Flipping between channels, he saw a race he'd not seen before – a triathlon. He was captivated by the strength and determination the contestants in this difficult race exhibited and told his mother he would some day compete in that race. The road to meeting that goal wasn't straight or easy, but in 2004, Shad finished his first triathlon – the world famous Ironman – in Lake Placid, New York. He was the first dialysis patient to ever do so. By beating the astronomical odds against him through sheer guts and perseverance, he became a swimming, biking and running symbol of courage and hope in the face of a killer disease.

THURSDAY

What's Wrong with This Picture? *Clarica Douglas, CHT*

Pictures of dialysis units form the basis of this interactive session. What's wrong in the picture? What's right? This engaging session will help you go back to your dialysis unit with a fresh eye for what needs to be changed.

End of Life Issues *Jeff Lux, DaVita*

It's a fact of dialysis – technicians are often helping their patients deal with end of life issues. This session will provide useful ideas of how to make things easier for your patients.

Moving Forward *John Sweeny, BS, CHT*

You've just finished this great boot camp... what's next? NANT's favorite speaker, John Sweeny, will give you concrete suggestions of how to take what you have learned back to your dialysis unit and how to share this information in a way that will impress your supervisor and ensure that you will be selected to attend the next great educational program that NANT has to offer.

CONCURRENT SESSION TRACKS

WEDNESDAY

Clinical

Fluid Management and Physiological Effects on the Body *Jennifer Pederson, RN, MSN, DaVita; Amelia Bell Hawkins, MSN, RN, APRN-BC, CRNP-F*

This three part session will provide an overview on fluid management with a focus on sodium/potassium and phosphorous/calcium.

Dialyzer Dynamics: Testing Your Understanding *John Sweeny, BS, CHT*

Do you understand what is actually happening in the dialyzer during a treatment? Keep in mind that you can't see fluid movement, watch molecules diffuse

continued on next page

"I learned how valuable we technicians really are and how our dedication to the well-being of our patients matters on every level."

"I won a scholarship to the symposium from RPC. This was my first time at the symposium and I found it very informative, the speakers were great and I learned a lot that I was not aware of relating to water treatment."

PROGRAM HIGHLIGHTS

CONCURRENT SESSION TRACKS

CLINICAL - WEDNESDAY *continued*

across a membrane, or even barely see the fibers inside, so what is really happening? This lecture will give you a chance to see if what you believe is correct through a series of questions and answers. Keep your own score and find out if your personal "picture" is correct.

Transplantation Difficulties *Alexander J. Gilbert, MD, Transplant Nephrologist, MedStar Georgetown University Hospital*



How can you help your dialysis patient get ready for a kidney transplant? This session will discuss the process your patient will go through from the day their name is put on the list through post recovery.

Hands-on Session: Vascular Access

This session will include three stations that small groups will visit for hands-on practice: All about Buttonholes, Access Assessment, and Access Bingo.

Biomedical

Life Safety Codes *Danilo Concepcion, CBNT, CCHT-A, FNKF, Operations Manager, Renal Services, St. Joseph Hospital*

Often biomed technicians are responsible for general facility management. Maintaining the dialysis facility is just as important as maintaining the dialysis machines. Preventive maintenance can forestall significant problems that can be detrimental to the health of dialysis patients and staff alike.

Hemodialysis Machines: Testing Your Understanding

John Sweeny, BS, CHT

What is really happening in the dialysis machine during a treatment? You can't see inside it – but the more you understand what is happening, the better you can keep it going. This lecture will give you a chance to see if what you believe is correct through a series of questions and answers. Keep your own score and find out if your personal "picture" is correct.

Electrical Safety

Paul Haggarty, MarCor

Fluids and electricity don't mix! But, that's exactly what happens in a hemodialysis machine. This session is designed to review electrical safety that might result saving someone's life... maybe even your own!

Current Survey Citations and How to Avoid Them

Joan Travis

Your unit is being surveyed next week – are you ready? This session will explore the most common survey citations and provide tips and techniques of how you can avoid being cited.

Managing Your Team for Success!

Kevin Burns, Satellite Healthcare and Fran Rickenbach, CAE, IOM

Getting your team all moving in the same direction can be a challenge – but one you must meet if you want to climb your personal career ladder. This session will provide specific tips and tricks designed for biomedical technicians as well as a hands-on exercise which will give you a different view of how to build consensus.

Hands-on Session: Techniques for Biomedics

This session will include three stations that small groups will visit for handy techniques.

"The exhibits had great representation in all areas of dialysis."

"Everything in the exhibit hall was well organized. The vendors did not mind explaining everything to you and there was always someone around to answer any questions that we may have had."

NANT EXHIBIT HALL

Our exhibit hall continues to grow with our focus on products and services which technicians purchase and use. We kick-off the 2015 Annual Symposium with the Grand Opening of the Exhibit Hall, Tuesday evening, from 5:00 – 7:00 pm. Come prepared for an evening full of fun and networking. Don't miss your opportunity to meet and greet key industry players.

Representatives from major industry manufacturers and suppliers will be on hand to discuss their products and services with symposium participants.

This is a great opportunity to learn about the latest programs, products and innovations in the nephrology field. Witness demonstrations, pick-up samples and participate in raffles in the exhibit hall.

Refreshment breaks throughout the symposium will be held in the exhibit hall. The exhibit hall will be open during breaks through Wednesday evening.



EXHIBIT HOURS

Tuesday, 17 March

5:00 – 7:00 pm

Exhibits Grand Opening Reception

Wednesday, 18 March

9:35 – 10:35 am *Refreshments in Exhibits*

2:35 – 3:15 pm *Refreshments in Exhibits*

5:00 – 6:00 pm *Refreshments in Exhibit/
Raffle Drawings/Close*

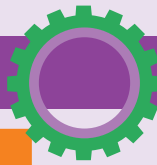
Interested in exhibiting?

Go to DialysisTech.net

"The NANT annual symposium is always attended by the most enthusiastic nephrology community members, a.k.a. the technicians and technologists."

"I have learned very informative topics such as core survey from CMS. I like getting to know more about new technology and home hemodialysis programs."

2015 SCHEDULE AT A GLANCE



Monday, 16 March

8:30 am – 4:00 pm	Water Treatment for Dialysis Workshop additional fee; must register in advance 7.2 CH
8:30 am – 4:00 pm	Are You in Compliance? Workshop additional fee; must register in advance 7.2 CH
8:30 am – 4:00 pm	Fresenius Machine Troubleshooting Workshop additional fee; must register in advance 7.2 CH
9:00 am – 3:00 pm	NANT Board of Directors Meeting
11:30 am – 1:00 pm	Lunch on own

Tuesday, 17 March

8:00 – 8:10 am	Opening Session
8:10 – 9:10 am	Become the Expert on Bedbugs in One Hour! <i>Larry Park, MSPH, CHCM, CPEA</i> 1.2 CH
9:10 – 10:10 am	The A&P Quiz Show <i>Amelia Bell Hawkins, MSN, RN, APRN-BC, CRNP-F</i> 1.2 CH
10:10 – 10:40 am	Break
10:40 – 11:40 am	Fears and Tears: A New Way of Looking at Emotions in Dialysis Patients <i>Terri Cally, LMSW</i> 1.2 CH
11:40 am – 1:00 pm	Lunch on own
1:00 – 1:50 pm	Healthcare Reform-Flying Into the Future <i>Denise VanValkenburgh, RN, BA</i> 1.0 CH
1:50 – 2:40 pm	Certification: Future Trends, Recertification Requirements – BONENT, NNCC, NNCO 1.0 CH
2:40 – 3:10 pm	Break
3:10 – 4:10 pm	Baseline Patient Empowerment Project <i>Shad Ireland</i> 1.0 CH
4:10 – 5:00 pm	State of NANT
5:00 – 7:00 pm	Grand Opening of Exhibits

"I think everything was useful. Some topics may have been somewhat of a review, but there is always something new or different to learn."

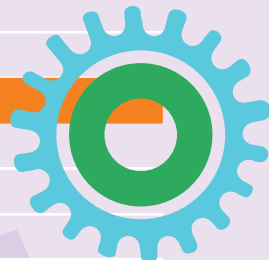


Wednesday, 18 March

CONCURRENT SESSIONS	CLINICAL 6.5 CH	BIOMEDICAL 6.5 CH
8:00 – 8:45 am	Fluid Management and Physiological Effects on the Body <i>Jennifer Pederson and Amelia Bell Hawkins</i>	Life Safety Codes <i>Dani Concepcion, CBNT, CCHT-A, FNKF</i>
8:50 – 9:35 am		Hemodialysis Machines: Testing Your Understanding <i>John Sweeny</i>
9:35 – 10:35 am	Refreshments in Exhibit Area	
10:35 – 11:20 am	Fluid Management <i>continued</i>	Electrical Safety <i>Paul Haggarty</i>
11:20 am – 1:00 pm	Lunch	
1:00 – 1:45 pm	Dialyzer Dynamics: Testing Your Understanding <i>John Sweeny</i>	Current Survey Citations and How to Avoid Them <i>Joan Travis</i>
1:50 – 2:35 pm	Transplantation Difficulties <i>Alexander J. Gilbert, MD</i>	Hands-On Session: Techniques for Biomedics <i>Robert McMullen and Roger Hall</i>
2:35 – 3:15 pm	Refreshments in Exhibit Area	
3:15 – 4:50 pm	Hands-on Session: Vascular Access	Monitoring Strategies for Water Systems <i>Joe Johnston, Senior Vice President of Biomedical Services, Fresenius Medical Care</i>
5:00 – 6:00 pm	Reception in Exhibits	
7:00 – 10:00 pm	Club NANT sponsored by GIA Medical	

Thursday, 19 March

7:30 – 8:30 am	Networking Breakfast
8:30 – 9:15 am	What's Wrong with This Picture? <i>Clarica Douglas, CHT</i> 0.9 CH
9:15 – 9:30 am	Refreshment Break
9:30 – 10:15 am	End of Life Issues <i>Jeff Lux</i> 0.9 CH
10:30 – 11:30 am	Moving Forward <i>John Sweeny, BS, CHT</i> 1.2 CH





Tropicana

LAS VEGAS

TROPICANA LAS VEGAS a DoubleTree by Hilton Las Vegas, NV

The legendary Tropicana Resort & Casino is located among the hottest four corners on the world-famous Las Vegas Strip. Connected by a covered walkway to the MGM Grand, right across the street and surrounded by New York, New York and Excalibur Casinos on the other three corners. This central Strip location offers guests spectacular views of the Las Vegas lights or of the lush, tropical ambiance of the resort's stunning five-acre garden oasis. The Tropicana Resort features over 1,800 spacious, comfortably appointed rooms and luxurious suites for your relaxation and pleasure. It is located close to the McCarran Las Vegas Airport.

The all-new Tropicana Las Vegas unveiled a \$180 million South Beach-inspired transformation and its new look, exciting rhythm and vibe. Improvements continue – you'll see that the meetings area has been remodeled.

Reserve your room by calling 1.800.634.4000. You must identify that you are attending the **NANT 32nd Annual Symposium**. Rates cannot be changed at check-in or check-out for guests who fail to identify their affiliation at the time the reservation is made. When you reserve your room in this manner, you will be assigned to

the newly renovated Island Tower. This 21-story tower is located directly above the convention center, near the pool and gardens. Included in the Island Tower rooms are either a king size bed and pull out sofa, or two queen size beds. *Please note, the less expensive rooms available through internet sites are not as large, nor as conveniently located in proximity to the symposium rooms.*

The NANT room rates are **\$93 single/double** plus 12% occupancy tax and 8.1% sales tax; this rate includes the daily resort fee. Room rate for Friday and Saturday before or after the symposium is \$140. There is an additional \$25 charge per person over two, up to four to a room. Room availability cannot be guaranteed beyond **20 February 2015**. The hotel requires a one night's deposit, refundable if reservations are cancelled at least 14 days prior to arrival. Guests will be required to submit a valid credit card or \$100 cash deposit at the time of check-in. *If you use a debit card at the time of check-in, the hotel will make an immediate withdrawal of the total fees plus an estimate of your incidental expenses. If you wish to use a debit card, we recommend that you make the \$100 cash deposit as you arrive and only present your debit card upon your departure as you check out.*

MAKE YOUR RESERVATIONS ONLINE BY GOING TO

<http://bit.ly/1roF29A>

"Networking with my fellow colleagues was very helpful. I enjoyed the new conference facilities (close proximity to rooms and exhibit hall). Overall great biomedical stream."

THE FINE PRINT

WHAT IS INCLUDED IN YOUR REGISTRATION

The Full Symposium Registration includes all educational programs and social events from Tuesday at 8:00 am through Thursday at 11:30 am. Daily registration for each day includes all educational programs and social events held on that day.

CANCELLATION LIABILITY

In the event of cancellation of the symposium for any reason, the National Association of Nephrology Technicians/Technologists liability is limited to the return of the symposium fee.

CANCELLATION POLICY

A cancellation fee of 25 percent will be charged for all cancellations made after **27 February 2015**. All cancellations must be in writing. Confirmed registrants who fail to attend and do not cancel prior to **6 March 2015** are liable for the entire symposium registration. You may, if you wish, send a substitute.

CONTINUING EDUCATION CONTACT HOURS

Earn up to **16.1** continuing education contact hours by attending **every** session during the symposium, and up to an additional **7.2** contact hours for a Monday workshop.

NANT is approved as a provider of continuing education by the California Board of Nursing, BRN provider number 07941. The Board of Nephrology Examiners, Nursing and Technology (BONENT), the National Nephrology Certification Organization (NNCO) and the Nephrology Nursing Certification Commission (NNCC) will accept contact hours received at this meeting.



DIALYSIS BOOT CAMP: BRUSHING UP YOUR SKILLS



16-19 March 2015
Tropicana Hotel, Las Vegas

23.3
CONTACT HOURS
BY ATTENDING SESSIONS
AND A MONDAY WORKSHOP!
See inside for details.

NANT 32ND ANNUAL SYMPOSIUM

FEATURED SPEAKERS

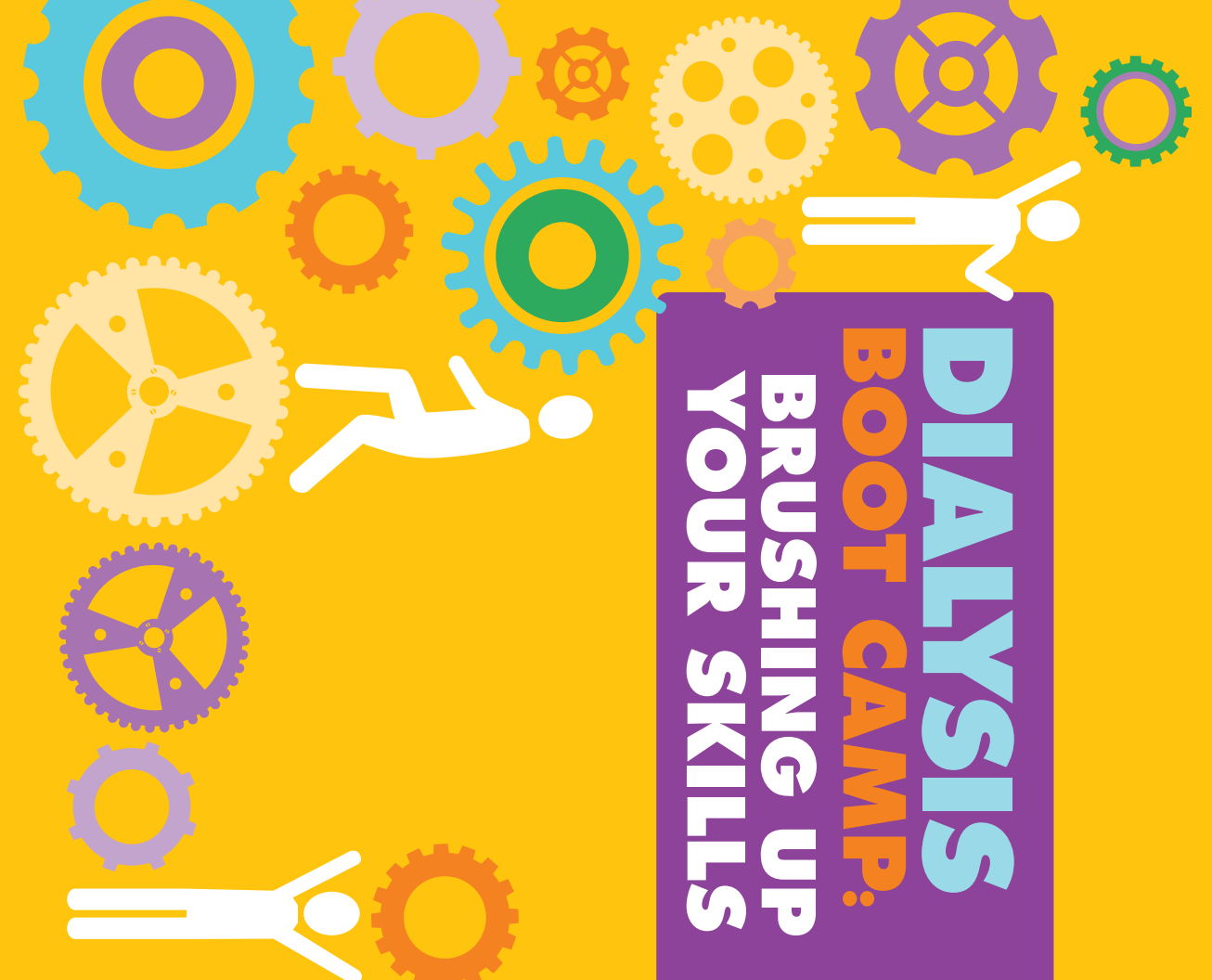
Larry Park, MSPH, CHCM, CPEA | Amelia Bell Hawkins, MSN, RN, APRN-BC, CRNP-F | Terri Cally, LMSW Education and Community Outreach Director, MARC Network 5 | Denise VanValkenburgh, Consultant | Shad Ireland | Clarica Douglas, CHT | Jeff Lux, DaVita | John Sweeny, BS, CHT | Jennifer Pederson, RN, MSN | Alexander J. Gilbert, MD, Transplant Nephrologist, MedStar Georgetown University Hospital | Danilo Concepcion, CBNT, CCHT-A, FNKF, Operations Manager, Renal Services, St. Joseph Hospital | Paul Haggarty, MarCor | Kevin Burns, Satellite Healthcare | Fran Rickenbach, CAE, IOM



P.O. Box 2307
Dayton, OH 45401

IMPROVING THE QUALITY OF CARE FOR
THE CKD PATIENT

Pre-Sort
First Class
US Postage
PAID
Dayton, OH
Permit No. 709



NATIONAL ASSOCIATION OF NEPHROLOGY TECHNICIANS/TECHNOLOGISTS

32ND ANNUAL SYMPOSIUM

16-19 March 2015 • Tropicana Hotel, Las Vegas